



# Seffner Rock & Gravel

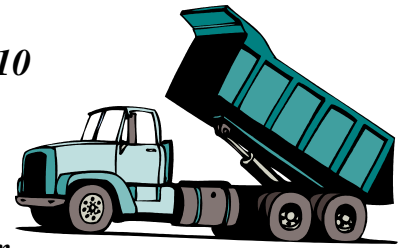
9715 Hwy 92 East, Tampa, FL 33610

Main Line 813-626-8884

Mon.-Fri. 7:00 – 5:00

www.seffnerrock.com

Email: [echristian@siteone.com](mailto:echristian@siteone.com)



**\* Delivery fees apply with a 3-yard minimum, and a signed property waiver is required \***

**Landscape Rule for Measurement:** One yard will cover a 10' x 10' area (100 sq ft) roughly 2"-2 1/2" deep.

\*Driveways and Parking areas require 4-6" of material.

### **\*\*\*Retail Pricing\*\*\***

#### **Aggregates**

##### Salt & Pepper Granite or

##### Gray & Pink Granite

1 1/2", 3/4" or 3/8"

\$118.89 per yard

\$72.52 per 1/2 yard

\$38.93 per 1/4 yard

\$6.00 per 5-gallon (you fill)

##### Limestone 1.5" – drain fields

\$91.67 per yard

\$55.92 per 1/2 yard

\$30.02 per 1/4 yard

\$4.50 per 5-gallon (you fill)

##### Limestone 3/4"

##### For drain fields & driveways

\$75.56 per yard

\$46.09 per 1/2 yard

\$24.74 per 1/4 yard

\$4.00 per 5-gallon (you fill)

##### Limestone 3/8" (pea sized)

\$76.67 per yard

\$46.77 per 1/2 yard

\$25.11 per 1/4 yard

\$4.25 per 5-gallon (you fill)

##### Pastel Alabama Marble

\$211.12 per yard

\$128.78 per 1/2 yard

\$69.13 per 1/4 yard

\$12.00 per 5-gallon (you fill)

##### Red Rock – has fines in it

\$205.56 per yard

\$125.39 per 1/2 yard

\$67.31 per 1/4 yard

\$11.75 per 5-gallon (you fill)

##### Washed Shell Small or Med

\$58.33 per yard

\$35.58 per 1/2 yard

\$19.10 per 1/4 yard

\$4.08 per 5-gallon (you fill)

##### Small Rip Rap 6" – 12"

\$131.95 per yard

\$80.49 per 1/2 yard

\$43.21 per 1/4 yard

##### Large Rip Rap 12" – 24"

\$143.34 per yard

\$87.43 per 1/2 yard

##### Brown River Rock 1 1/2" or 3/4"

\$181.12 per yard

\$110.48 per 1/2 yard

\$59.31 per 1/4 yard

\$8.50 per 5-gallon (you fill)

##### Oversized Brown River - 4" and down

\$211.12 per yard

\$128.78 per 1/2 yard

\$69.13 per 1/4 yard

\$11.00 per 5-gallon (you fill)

##### White River Rock 1 1/2"

\$242.23 per yard

\$147.76 per 1/2 yard

\$79.32 per 1/4 yard

\$12.50 per 5-gallon (you fill)

##### Red or Black Lava

\$227.79 per yard

\$138.95 per 1/2 yard

\$74.59 per 1/4 yard

\$11.75 per 5-gallon (you fill)

##### Rainbow River Rock 1 1/2"

\$290.00 per yard

\$176.90 per 1/2 yard

\$94.98 per 1/4 yard

\$15.00 per 5-gallon (you fill)

#### **Specialty Rock**

##### Jellybean Pebbles (54 bags makes 1 yd)

\$28.00 per bag

##### Mexican Beach Pebble – Black, Multi or Red

\$1,334.00 per yard (1 pallet)

\$40.00 per 5-gallon bag

##### White Carribean Beach Pebbles 1-2" & 3-5"

\$1,334.00 per yard (1 super sack)

\$40.00 per 5-gallon bag

Methods of payment include cash, check and all major credit cards

**\*\*Prices are subject to change\*\***

**Bagged Mulch**

3 cubic foot bags of mulch

(9 bags make 1 yard)

Shredded blend \$4.22 per bag

Pine Bark \$4.07 per bag

2 cubic foot bags

(13 bags make 1 yard)

Dyed Red Shredded \$3.21 per bag

Dyed Black Shredded \$3.21 per bag

Dyed Cocoa Brown \$3.21 per bag

2 cubic foot bags

(13 bags make 1 yard)

Red Pine Bark \$3.21 per bag

Pine Bark Fines \$3.61 per bag

**Mulch & Pine Straw**

Shredded Cypress Blend

\$33.00 per yard

\$20.00 per 1/2 yard

Red Shredded Mulch

\$34.00 per yard

\$21.00 per 1/2 yard

Pine Bark Nuggets

\$34.44 per yard

\$17.28 per 1/2 yard

Pine Straw bales

(coverage: 30 sq ft 1/2" base)

\$6.89 per bale

**Bases**

DOT Limerock Roadbase

(a base for HOT asphalt)

\$35.00 per yard

\$21.00 per 1/2 yard

\$12.00 per 1/4 yard

Crushed Asphalt

(driveways 1.5" minus)

\$38.00 per yard

\$24.00 per 1/2 yard

\$13.00 per 1/4 yard

Shell Base

(sand, clay & shell mixture)

\$34.00 per yard

\$20.33 per 1/2 yard

\$10.92 per 1/4 yard

**Bases for Turf or Pavers**

Limestone Screenings

\$45.00 per yard

27.45 per 1/2 yard

14.74 per 1/4 yard

Concrete Fines

\$39.00 per yard

\$19.50 per 1/2 yard

\$9.75 per 1/4 yard

**Soils & Dirt**

Fill Dirt

(Sandy material can have some clay -

**for filling in holes in your yard or under sod)**

\$23.33 per yard

\$14.23 per 1/2 yard

\$7.64 per 1/4 yard

\$2.40 per 5-gallon (you fill)

Potting Soil (50% Compost & 50% Hardwood shavings  
**for potted plants)**

\$32.00 per yard

\$19.00 per 1/2 yard

\$11.00 per 1/4 yard

\$3.15 per 5-gallon (you fill)

Compost

(shredded trees, leaves & limbs that has been  
composted down – **for vegetables or flowers)**

\$25.56 per yard

\$15.59 per 1/2 yard

\$8.37 per 1/4 yard

\$2.65 per 5-gallon (you fill)

Topsoil

(Dark rich soil - **for vegetables, seeding lawn &**  
**filling low spots in yard)**

\$28.00 per yard

\$17.00 per 1/2 yard

\$10.00 per 1/4 yard

\$3.15 per 5-gallon (you fill)

**Sands & Clay**

Fine Mason Sand

(under pools)

\$50.56 per yard

\$30.84 per 1/2 yard

\$16.56 per 1/4 yard

\$3.25 per 5-gallon (you fill)

Concrete Sand

(coarse sand)

\$52.78 per yard

\$32.19 per 1/2 yard

\$17.28 per 1/4 yard

\$3.30 per 5-gallon

Yellow Sand

(topping off lawn)

\$30.00 per yard

\$19.00 per 1/2 yard

\$10.00 per 1/4 yard

\$2.50 per 5-gallon (you fill)

Red Clay

(baseball clay)

\$39.00 per yard

\$24.00 per 1/2 yard

\$13.00 per 1/4 yard

\$2.50 per 5-gallon

**Bagged Cement, Polymer Sand or Dust & Rebar**

Gray Portland Type IL 94lbs \$18.56

Florida Super Masonry \$16.11

Sand Mix 84lbs \$7.44

Rebar 10' long 3/8" \$3.88

White Portland \$30.28

Sakrete 80lbs \$7.50

Stucco 80lbs \$15.95

**Railroad Ties** 8.5' long and 7"x8.25" wide \$37.00 each

Last updated on 4/15/24

Methods of payment include cash, check and all major credit cards

\*\*Prices are subject to change\*\*